

TAKISADA NAGOYA Sec.32'  
2023/24  
Autumn & Winter



## "All is made for LOVE"

When we thought about what we should create  
as consumers shift toward spending on sustainability,  
we realized that from long ago,  
humans have been creating based on the instinctive desires to come up with  
something that moves people and to see things yet unseen.

For the 2023–24 A/W season, we in Section 32 wanted to give  
form to something that exhilarates and moves people—  
something that's more than just trendy.

Feeling a desire to create textiles along with a love for the things that move us,  
we present our proposals for this season's textiles.



## TOPICS COLOR



The focus is variations of brown, spanning from earthy ochres to warm wood and brick tones. Within that variation, flashy colors add light, and timeless navy blues and classic reds appear too. This season will see the rise of midtones, but it won't be too stylish—it's all about colors that showcase texture.

## TEXTILE KEY POINT

**emotional** : Creating textiles that move people

**ethical** : Creating in an environmentally-friendly way

**Inclusive** : Creating seamless textiles

## IDEA POINT

**deco** : Decorative fabrics that delight and make fashion exciting

**comfort** : Comfortable, functional textiles

**eternal** : Carefully selecting wool when developing fabrics to create timeless staples

## TOPICS TEXTILE

Textiles that span all themes and unite them

This season is also about the free-spirited combinations and overlapping that moves us.

32-3A7424

32-20223

32-6506

32-3A3110

32-3A6908

32-3A3054

32-3A7424 ( N/P SATIN JQ BOTANICAL ) : P74 N26  
32-20223 col.pink ( HEAVY MOHAIR SHAGGY ) : W77 Mo13 N10  
32-6506 col.37 ( TA/P MISSION SATIN ) : TA89 P11

32-3A3110 ( BRITISH WOOL BONDING ) : Face:P100 Back:W100  
32-3A6908 ( RODIMULTIREX ) : P73 C24 Af2 Lame1  
32-3A3054 ( GRAMPIANS CORD MOKU ) : W64 P36

2023/24  
Autumn  
&  
Winter ①

# PROTECTION



## PROTECTION

Volume and functionality combined with protection from the cold.

We enhanced Section 32's staple fabrics with ample texture, creating a technical outerwear fabric that can adapt to temperature and weather changes.

## COLOR



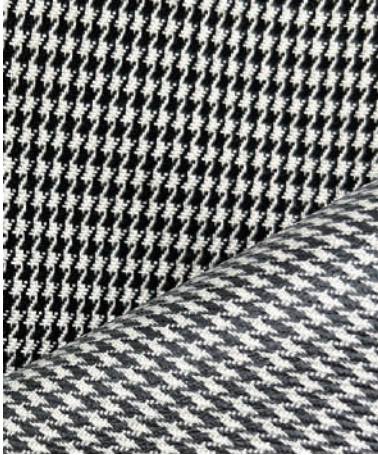
Textured and soft basic colors  
x Slightly bold and flashy colors

## POINT

- Pinsonic, a machine that uses ultrasonic energy to join layers of fabric together, used with punching to cut out parts of it.
- Two-layer bonding makes it moisture-permeable and waterproof.
- A finish that adds luster and patterns.

2023/24  
Autumn & Winter ①

PROTECTION



32-3A3073

GRAMPIANS CORD BONDING

FACE: W65 P35 BACK: Pu100 / 148cm

Made using worsted four-strand twisted yarn from the Grampians region in Australia in the warp and polyester woolly yarn in the weft, this dry stock-dyed outerwear fabric has been updated with water repellent processing and bonding.



32-3A3113

DOUBLE BONDY B

FACE: N89 W10 Pu1 BACK: P100 / 130cm

A tweed fabric made with special coarse nylon bonded with lightweight polyester that can be used with no backing. Its key point is its volume, which is perfect for use in oversized silhouettes.



32-3A3115

WEAR SUPPORTER

FACE: W96 Pu4 INSIDE: P100  
BACK: N100 / 140cm

A resilient bonded fabric with a three-tiered structure comprised of two-way worsted fabric, compressed urethane used in support belts, and a thin tricot material.



32-3A3005

MOEN

W80 P20 / 140cm

A dobby weave made with wool from the Grampians and flame-retardant polyester. This superior material is water repellent and feels smooth, yet has an expressive look.

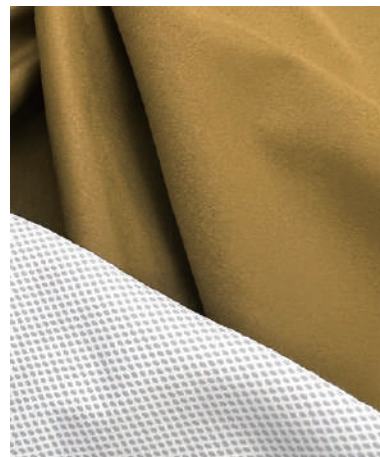


32-3A4318

WORSTED WOOL LIKE  
X PINSONICK

P100 / 140cm

Pinsonic processing was used on Section 32's staple worsted fabric, and the ultrasonic energy used to join it together gives this fabric a voluminous padding.



32-3A7001

MICRO PRIME FLEX  
2.5LAYERS

P100 / 130cm

A 2.5-layer coating was applied to two-way fabric made with Toray's Primeflex™ micro polyester, making this lightweight, functional fabric moisture-permeable and waterproof.

2023/24  
Autumn  
&  
Winter ②

# MASTER PIECE



## MASTERPIECE

Carefully selecting wool with the idea of creating textiles people will still want to wear in 10 years.

From preparing the raw materials to designing and processing them, we cut costs by producing textiles in-house within Section 32 and working on them from start to finish.

## COLOR



Timeless classic colors with basic navy blues, reds, and greys as the underlying tones

## POINT

- Timeless, genderless textiles.
- Timeless staple fabrics that always feel special.
- Basic wool fabric with a twist, for a new balance you can dress up fashionably.

2023/24  
Autumn & Winter ②  
**MASTERPIECE**



**32-30207**

SPWOOL TWILL AIR FORZA

W100 / 130cm

A premium twill fabric made with 2/116 count worsted fine yarn spun with carefully selected Super 160's raw materials. It's also machine washable thanks to an environmentally friendly anti-felting finishing that uses the power of air.



**32-30036**

SEVERE ASMR BEAVER

W100 / 133cm

A quality fabric made with a woolen yarn crafted from Super 140's wool that has fibers long enough to rival cashmere. With its premium raised Charme finish, this fabric naturally feels great on the skin and is pill-resistant as well.



**32-30245**

HARU-KING TWILL

W100 / 145cm

A worsted fabric made with traceable wool from the Grampians region in Australia. Haruto processing brings out its elasticity, giving it firmness and a dry feel with a supple texture at the same time.



**32-30026**

OATMEAL

W55 Li45 / 150cm

Made using traceable wool from the Grampians region in Australia in the warp and linen in the weft. It has a slight luster and drape in addition to a memory feel that's characteristic of linen, so it will give excellent silhouettes when tailored.



**32-3A3022**

MIN MIN PLAIN

W87 N17 / 134cm

A crisp worsted fabric made with a high twist yarn that combines wool and nylon filament. It's clean-cut and lightweight.



**32-3A3031**

GRAMPIANS CORD  
WATER REPELLENT

W65 P35 / 150cm

Made using worsted four-strand twisted yarn from the Grampians region in Australia in the warp and polyester woolly yarn in the weft, this firm fabric has been processed to be partially water repellent.

2023/24  
Autumn  
&  
Winter ③

DECO/  
Ancientec



## DECO/ Ancientec

The beauty of overlapping irregular colors and yarns, three-dimensional volume and unevenness, and metallic effects that add a slight sheen...

We're creating textiles people will want to wear, featuring bold decorations and timeless luxury that still boosts our moods in this day and age.

## COLOR



The color range is a blend of warm browns and dark and light decorative metallics, giving the textiles a rich feel.



2023/24  
Autumn & Winter ③  
DECO / Ancientec



32-3A6456

EUREKA

R41 W30 P24 N4 Pu1 / 150cm

A new work from La Torre, based in the Prato area of Italy. Its focal point is its never-before-seen look that comes from mixing the natural look of wool with the slight luster of bright yarn.



32-3A4336

T/R 2WAY TWILL EMBOSS

P86 R10 Pu4 / 150cm

A T/R fabric embossed with a luxurious damask pattern. It has just the right thickness and stretchability, making it great for use in a wide range of items.



32-3A3107

MERINO-FANCY GLAMOROUS

W86 R14 / 100cm

A fancy tweed melton featuring a bumpy surface and high-volume look thanks to the fine Super 100's raw Merino wool tightly compressed within it.



32-3A7301

LEAF JACQUARD LAME

P62 R38 / 110cm

A jacquard fabric featuring a three-dimensional uneven surface and luster from its decorative lamé. It's fairly light and can be used all year round.



32-3A2067

LOOP CUT SHAGGY

W41 Mo21 An24 N14 / 140cm

A shaggy fabric made with mohair loop yarn. The chambray gives it a random-looking pattern that looks like an animal print at first sight.



32-3A3008

NICE ON!

N84 W15 Pu1 / 143cm

A lightweight, fancy fabric made from a special thick nylon. It features an irregular melange look, achieved through dyeing it with various colors.

2023/24  
Autumn  
&  
Winter (4)

DECO/  
Digital  
Vibration 2.0



## DECO/ Digital Vibration 2.0

The mix of colors gives it artificial geometric patterns and unevenness, creating a flashy effect.

A sporty and elegant textile that's highly stretchy and drapes well.

It boasts hyperrealistic decorative features created to give off a visual effect.

## COLOR



The light and bright colors seem to shimmer and shine, creating a mix of colors that appears artificial.

2023/24  
Autumn & Winter ④  
DECO / Digital Vibration 2.0



32-3A4337

N/P EMBOSSED FINISH

FACE: N100 BACK: P100 / 145cm

A bonded fabric combining embossed, heat-treated nylon and polyester for an uneven feel. It works well with both sporty and feminine styles.

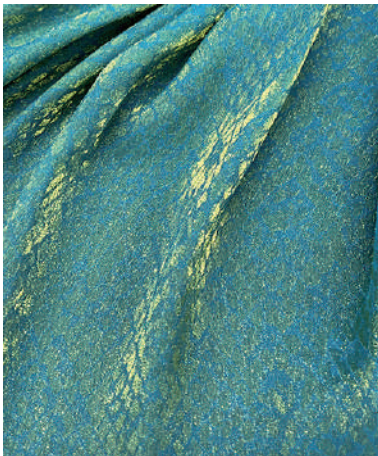


32-3A3042

MIDNIGHT CLUBBING

W85 P15 / 135cm

An ultra-fine polyester dyed with rainbow colors mimicking kasuri fabric, twisted with a worsted yarn to create a fabric that blends the clean-cut touch of wool with a visual effect that looks like glimmering artificial lights.



32-3A7422

N/P SATIN JQ ANIMAL

P77 N23 / 112cm

A thin jacquard fabric with a pattern that comes in and out of view depending where you look at it from. It features glimmering hues thanks to the chambray dyed with various colors.



32-3A4312

VIERACHI 2WAY  
SUPER CALENDERING

P100 / 142cm

A Viyella-style worsted fabric—perfect for any season—with added luster for a shimmering look.



32-3A7313

C/Cu LAWN AR PRINT

C66 Cu34 / 135cm

A material with a transfer print on it that shines like an aurora when a flashlight hits it.



32-3A4324

SERENA AMUNDSEN STRECH  
× PANCHING

P100 / 140cm

A solid double Amundsen fabric that gets its varying uneven look from the ultrasonic energy used on it and the holes punched out of it.